

Module: m/05/120

'timeware® activity centre ...'



It is recommended that the Alert Centre runs on a PC in the security office. The application can be left minimised and only maximised when security staff are required to check the realtime access activity.



1. Run the alert centre by double-clicking on the alert centre icon.

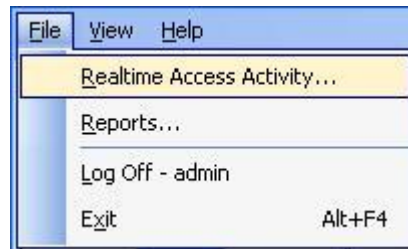


2. Next, log into the application by entering your user name and password.

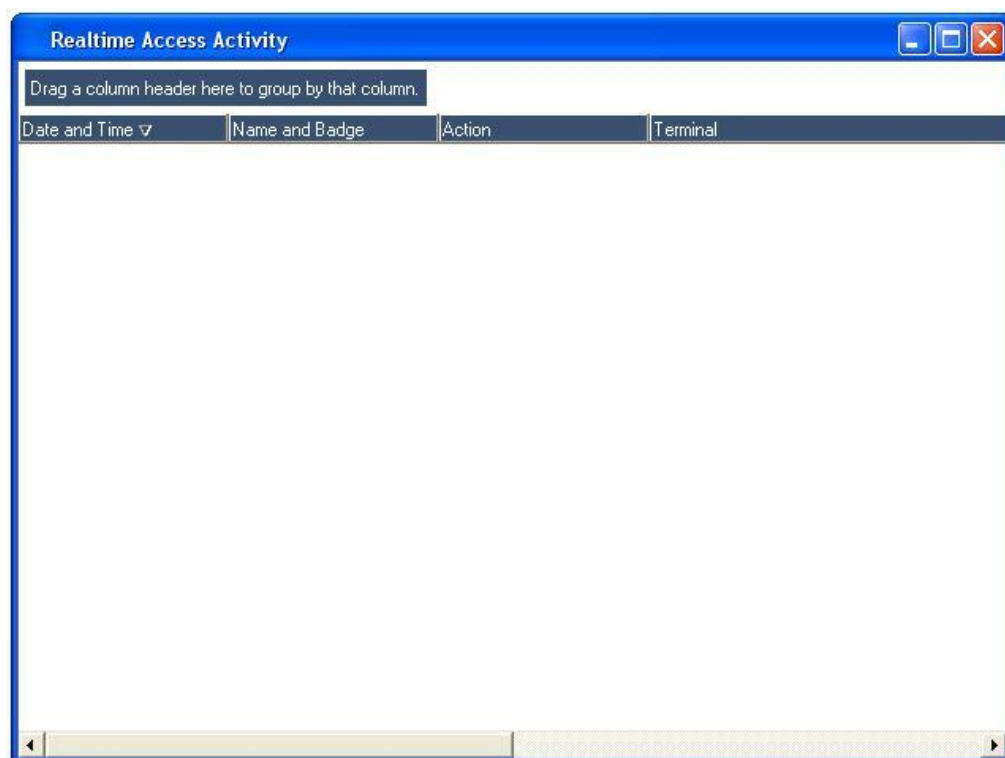




3. Next select File and click on Realtime Access Activity...



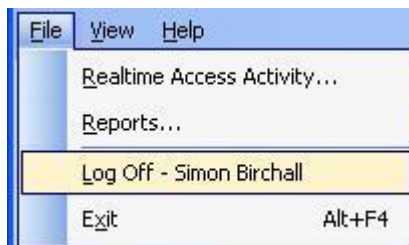
4. The Realtime Access Activity screen will then appear. Initially this screen will be blank.





5. As people move from zone to zone, information is displayed in the access activity window.

6. To log out of the alert centre, select File and Exit.





Notes