



## Module: m/01/106

*'Configuring the Personal Information Portal (PIP) service...'*



The PIP service performs **one** task:

- Serving PIP clients with information from the timeware® SQL database.



Configuring this service is completed through the Personal Information Portal application. To run the application you can either <double-click> on the PIP icon (on the Window's desktop):

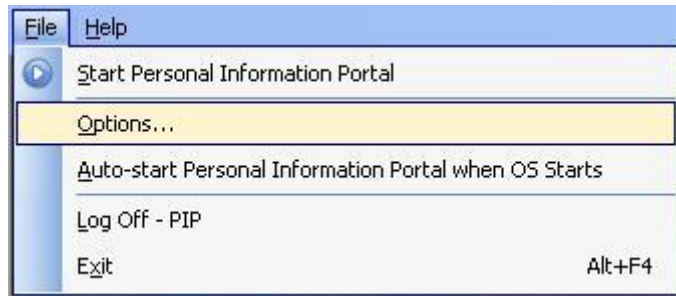


or select Personal Information Portal for the Program Files menu.

You will then be prompted to enter the PIP Password:

A Windows-style dialog box titled "Log In" with a blue header bar and a red close button in the top right corner. The dialog has two text input fields: "User name:" with the text "PIP" entered, and "Password:" which is currently empty. At the bottom of the dialog, there are two buttons: "Cancel" on the left and "Ok" on the right.

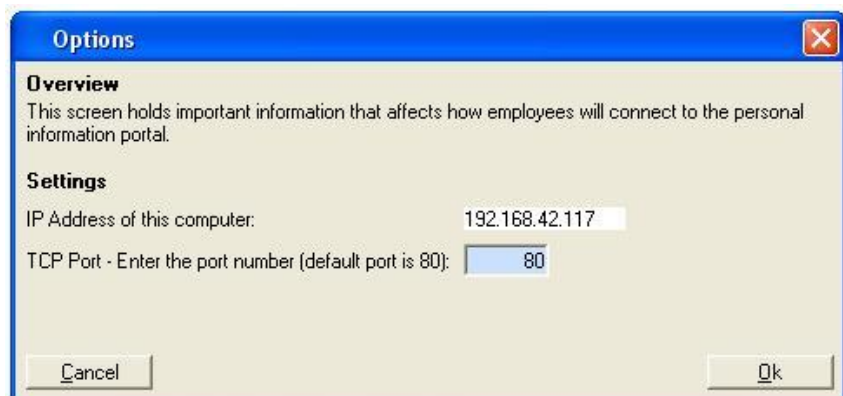
1. Select File and then Options...



2. Enter the correct TCP Port (the default is 80), and press <Ok>



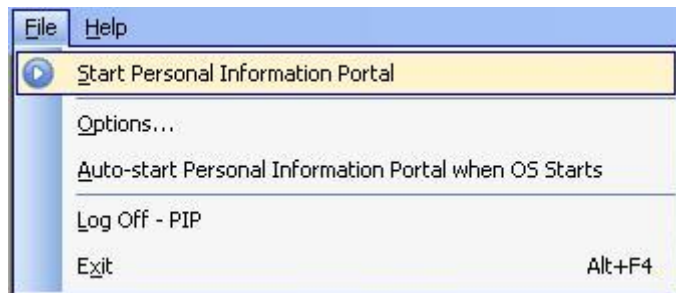
*Ensure that no other services are using the same port number!*





*Next, test that the port number is available by running the application...*

3. Select File and then Start Personal Information Portal

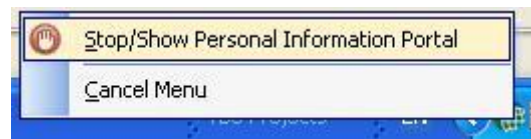


The application will then appear in the system tray;



*If an error does not occur, the port is free to be used!*

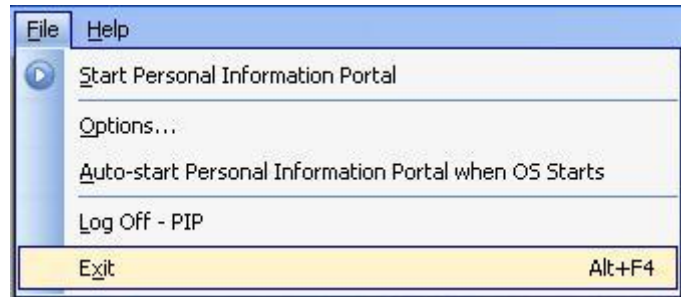
4. To stop the application, <Right-click> on the PIP icon in the system tray and select Stop/Show Personal Information Portal



5. If an error occurred at step 3, return to step 2, select a new port number and re-try.



6. Finally, select <Exit> to quit the application.



The Personal Information Portal will not work until you start this service, (see module m/01/008).