

Module: m/01/021

'Running a timeware[®] manual backup...'

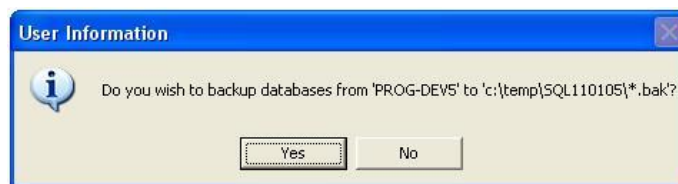


Before running a timeware[®] manual backup, you must ensure that the backup destination has been set, (see module m/01/035).

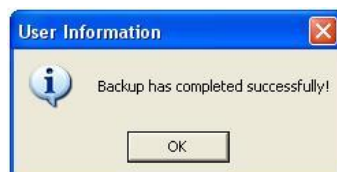
1. Click on the Advanced menu and select Backup Database...



2. Next, confirm the backup location on the timeware[®] server.



3. Once the backup is complete, press the <OK> button.





Notes