



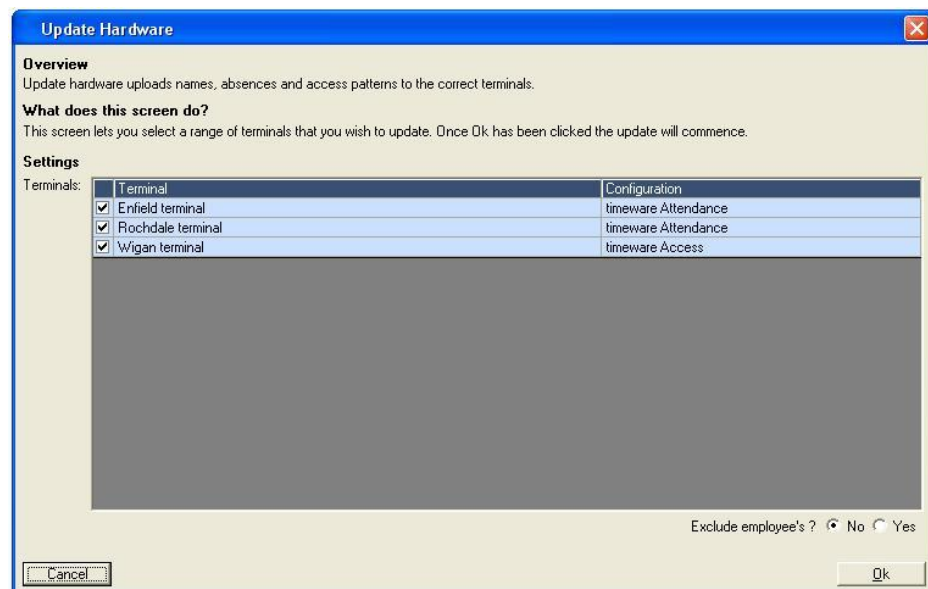
## Module: m/01/018

### 'Updating timeware® hardware...'

1. Click on the Hardware menu and select Update Hardware...

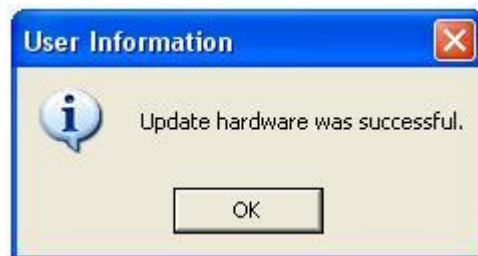


2. Select the required terminals and click <Ok>

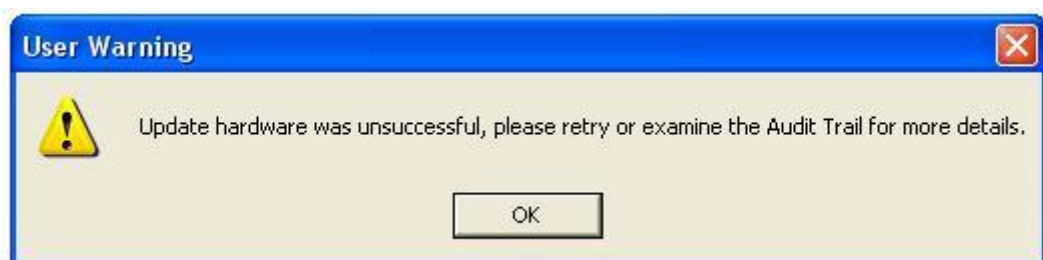


If you choose to 'Exclude employees', the personnel details will **not** be sent to the terminals, only the basic settings such as reader type and repeat-swipe value. Choose 'Exclude employees' when testing or configuring the timeware® hardware.

3. If the 'Update hardware' was successful, the following message will appear. By now, the selected terminals will have been updated.



4. If the 'Update hardware' was unsuccessful, the following message will appear.



In the event of an unsuccessful 'Update hardware', please check relevant IP addresses and if the problem persists, contact timeware® support.

5. Finally, when the 'Update hardware' is complete, close the form.

