



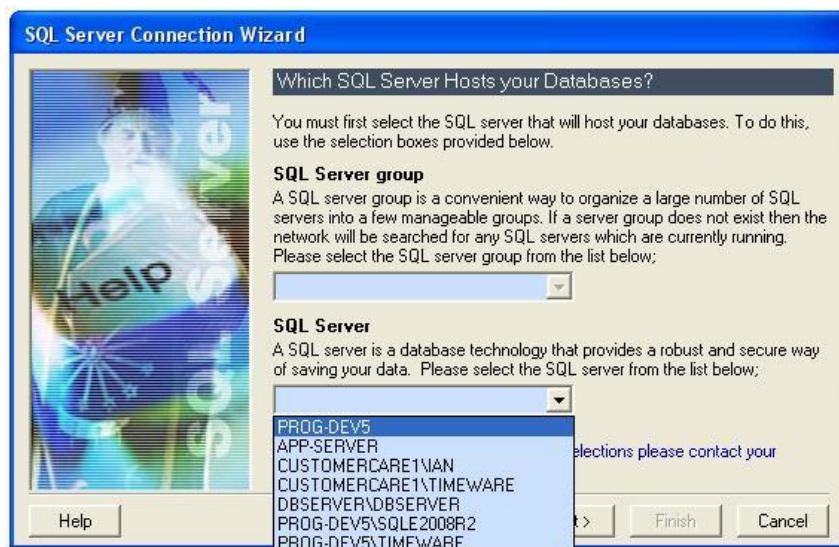
Module: m/01/011

'Connecting a timeware® client to the timeware® SQL server...'

1. When running the timeware® application on a timeware® client for the first time, the following screen will appear. Press <Next>.

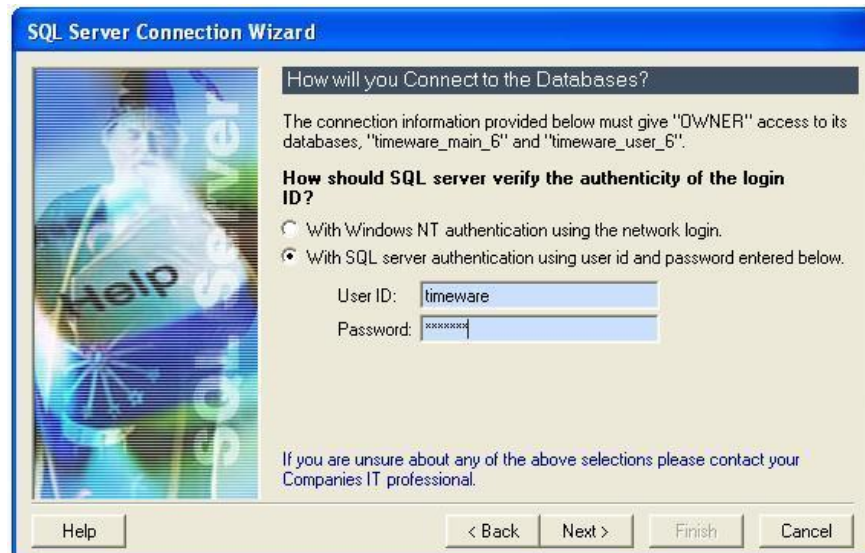


2. Select the timeware® SQL server from the drop-down list box. Press <Next>.





3. Next, select 'With SQL server authentication', enter the User ID (timeware) and then the password. Press <Next>.

The screenshot shows the 'SQL Server Connection Wizard' window. The title bar is blue with the text 'SQL Server Connection Wizard'. The main window has a light beige background. On the left, there is a vertical panel with a blue background and a wizard character. The text 'Help' is visible on this panel. The main area contains the following text: 'How will you Connect to the Databases?' followed by a paragraph: 'The connection information provided below must give "OWNER" access to its databases, "timeware_main_6" and "timeware_user_6".' Below this is the question 'How should SQL server verify the authenticity of the login ID?'. There are two radio buttons: the first is 'With Windows NT authentication using the network login.' and the second is 'With SQL server authentication using user id and password entered below.' The second radio button is selected. Below the radio buttons are two text boxes: 'User ID:' with the value 'timeware' and 'Password:' with a masked password 'XXXXXXXX'. At the bottom, there is a paragraph: 'If you are unsure about any of the above selections please contact your Companies IT professional.' and four buttons: 'Help', '< Back', 'Next >', and 'Finish'. The 'Next >' button is highlighted.

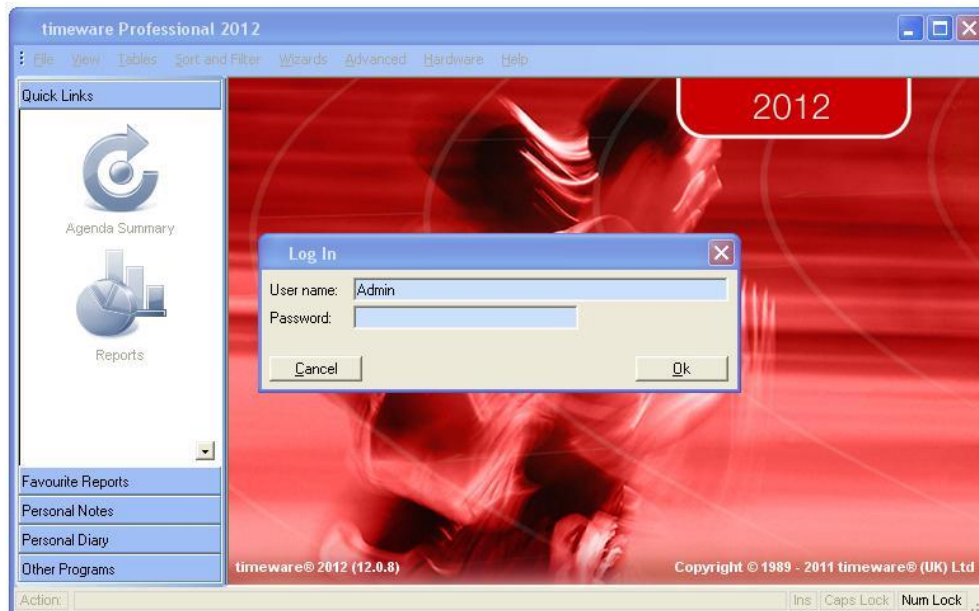
(The password should be identical to that defined when the database was created)

4. Press <Finish>.

The screenshot shows the 'SQL Server Connection Wizard' window at the 'End of Wizard' step. The title bar is blue with the text 'SQL Server Connection Wizard'. The main window has a light beige background. On the left, there is a vertical panel with a blue background and a wizard character. The text 'Help' is visible on this panel. The main area contains the text: 'End of Wizard' followed by a paragraph: 'Congratulations! You have successfully finished the SQL Server Wizard.' At the bottom, there are four buttons: 'Help', '< Back', 'Next >', and 'Finish'. The 'Finish' button is highlighted.



5. The timeware® application will now run.



6. Here is a quicker method of connecting to the timeware® SQL server:
Open the timeware software / TData folder on the timeware® server
and copy the SqlConnection.ini file. Paste the file into the same folder
on the timeware® client PC. The timeware application should now run
successfully.



Training module: m-01-011 *Connecting a timeware® client to the timeware® SQL server...*





Notes