



Module: m/01/004

'Creating the timeware® databases against your SQL server using the timeware® Application Manager...'



Before following this module you must have a SQL server installed and be aware of its DBA User ID and Password.



To run the timeware Application Manager you can either <double-click> on the icon (on the Window's desktop):



or select the timeware Application Manager from the Program Files menu:



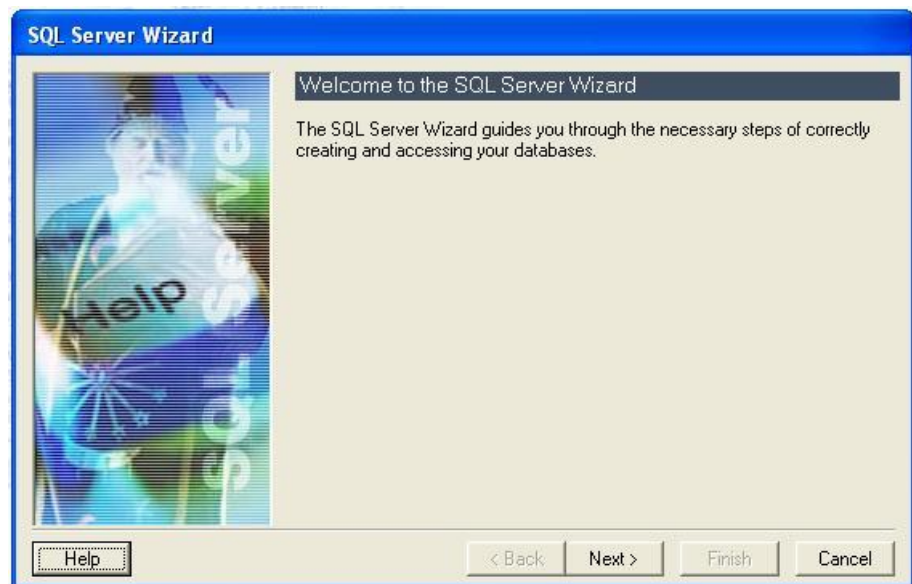
Training module: m-01-004 *Creating the timeware® databases against your SQL server using the timeware® application manager...*



1. Click on the File menu option and select Installation, then SQL Server Wizard...



2. Click <Next>.

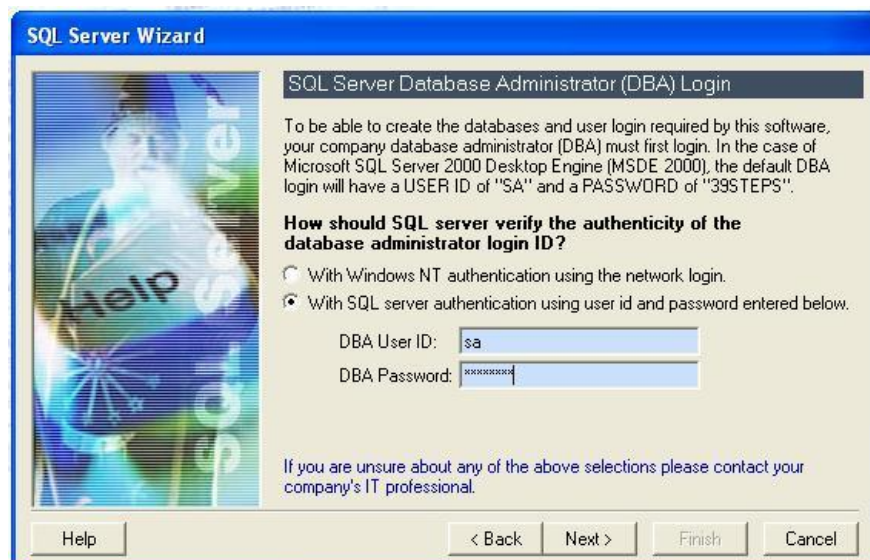




3. Select the SQL Server you wish to install the databases on and press <Next>.



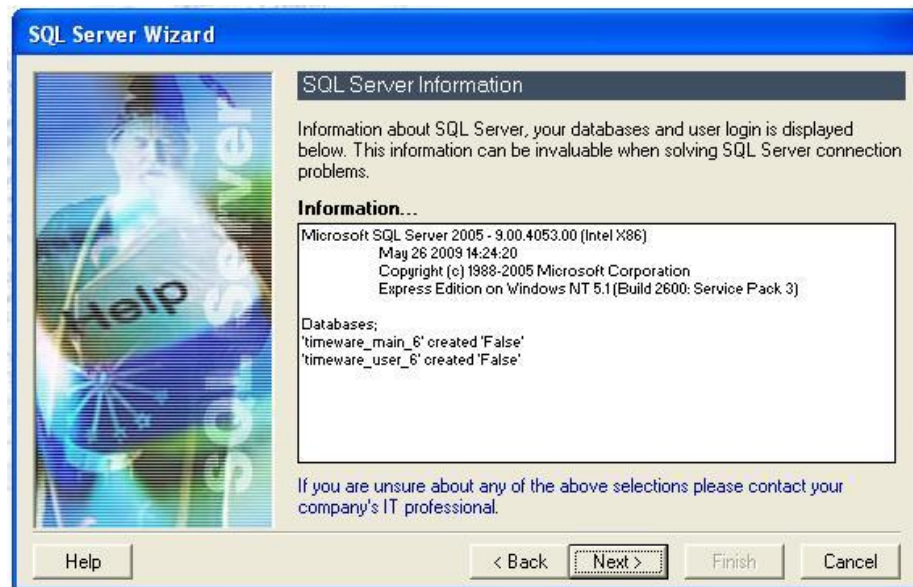
4. Now enter the DBA User ID and DBA Password. Press <Next>.



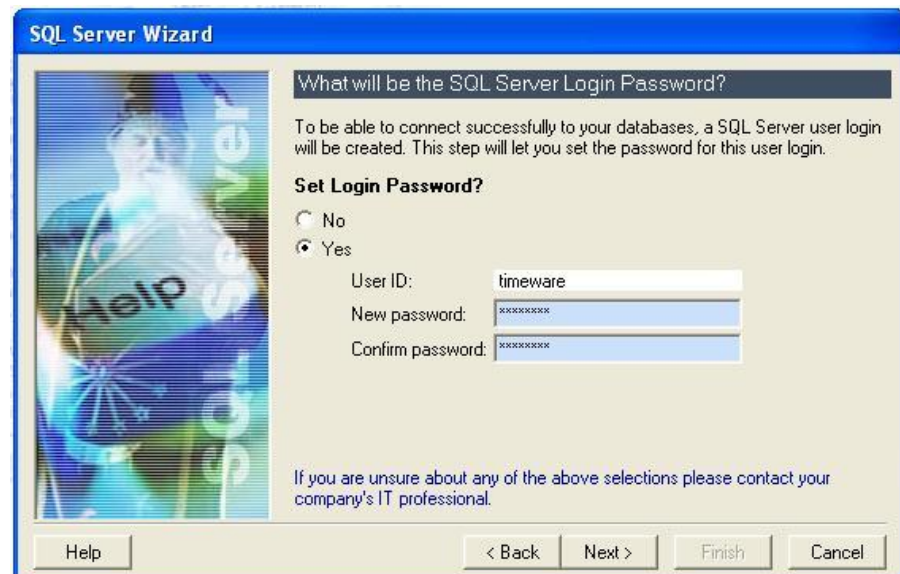
Training module: m-01-004 *Creating the timeware® databases against your SQL server using the timeware® application manager...*



5. The SQL server information is displayed along with the status of the database. Press <Next>.

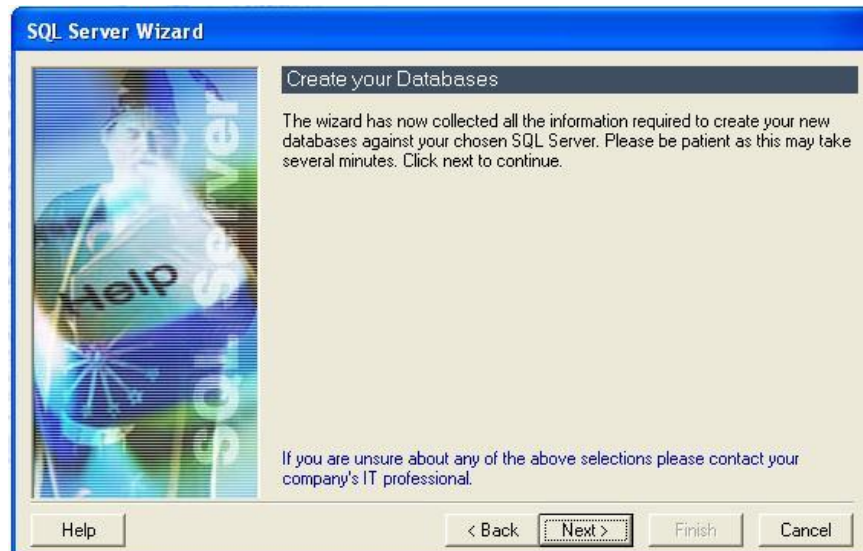


6. Set the User ID and password for the timeware database and press <Next>.





7. Click <Next> to create the database.



8. See the database creation status at the top of the screen.

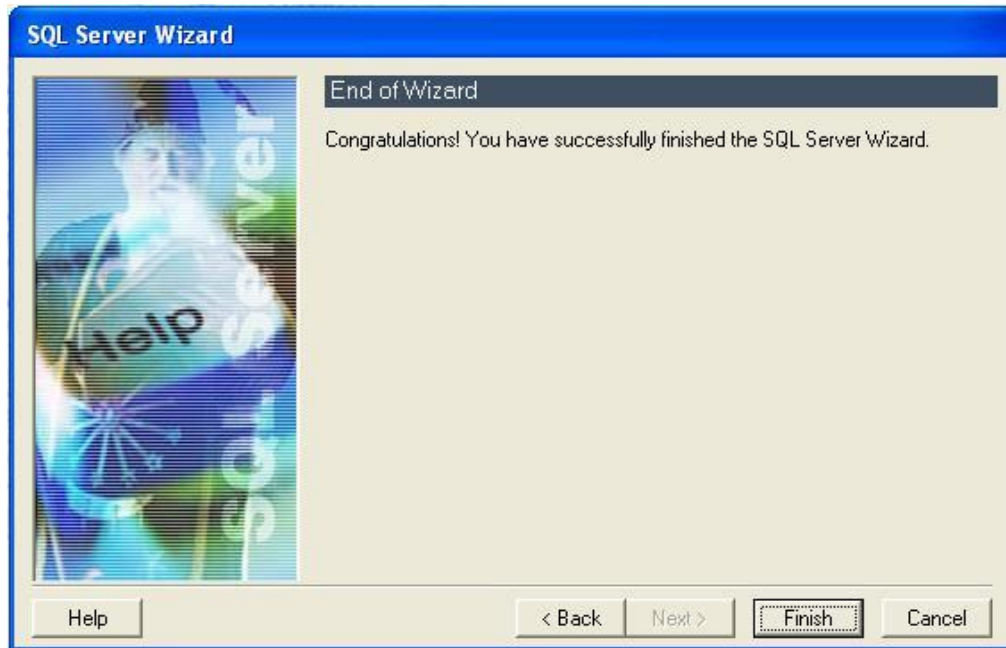
SQL Server Wizard, running create database script against 'timeware_main_6' please ...

9. Use the previously created User ID and Password to connect to the database.



Training module: m-01-004 *Creating the timeware® databases against your SQL server using the timeware® application manager...*

10. Click <Finish>.



11. To exit the timeware[®] Application Manager, click on the File menu option and select Exit.