



## Module: m/01/003

*'Installing timeware® on the timeware® server...'*



To complete this task you will require internet access and a password from timeware® support.

1. Download and Save the latest version of timeware® from the download page of the timeware® community website:  
<http://www.timeware.org/downloads.php>

### timeware professional 2012



The latest version of timeware Professional 2012 incorporating the long awaited planner feature. For a complete feature list, please refer to the release notes.

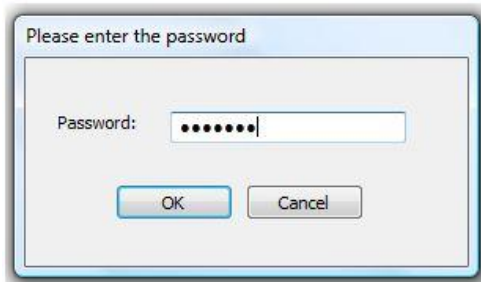


release notes



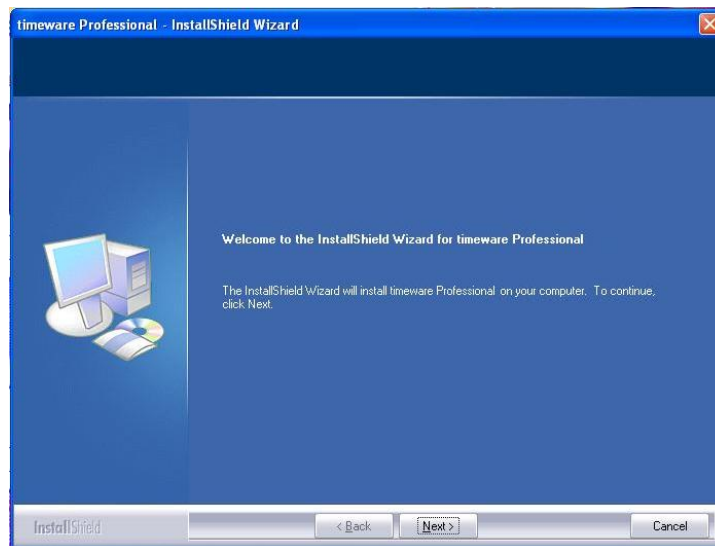
Download  
timeware 2012  
version 12.1.2  
released 11/02/12

2. Next, run the application and enter the password when prompted. This is available from timeware support on +44 (0) 1706 658222.

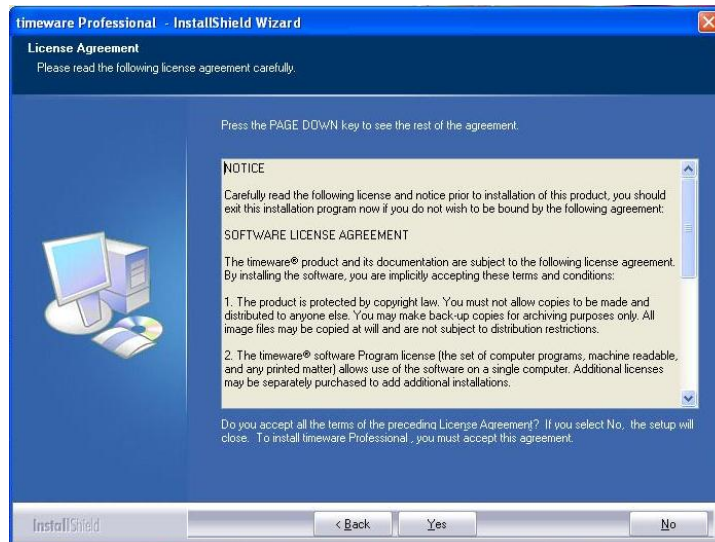




3. Read and follow the instructions.



4. Next, the license agreement.



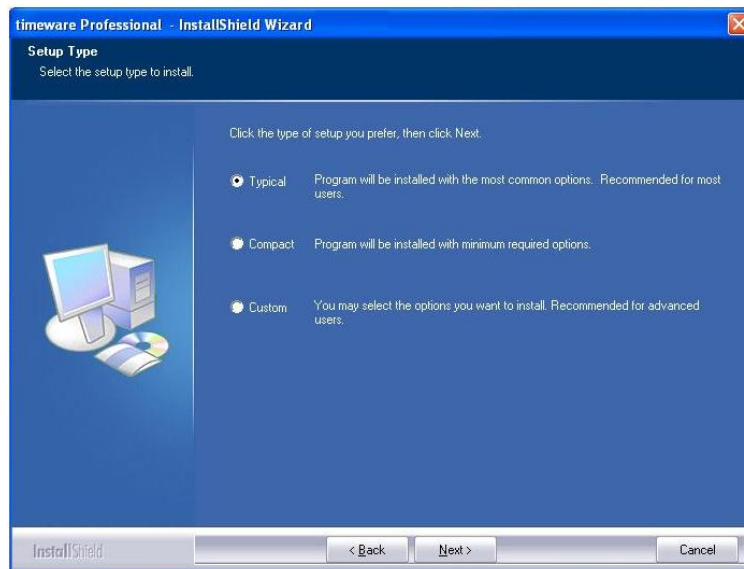


5. Then the Customer Information.

A screenshot of the "timeware - InstallShield Wizard" window, specifically the "Customer Information" step. The window has a blue header bar with the title "timeware - InstallShield Wizard" and a close button. Below the header, the text "Customer Information" and "Please enter your information." is displayed. On the left side, there is a graphic of a computer monitor, a tower unit, and a CD/DVD. The main area contains two text input fields: "User Name:" with "timeware" entered, and "Company Name:" with "timeware (UK) Ltd" entered. Below these fields, the text "Install this application for:" is followed by two radio button options: "Anyone who uses this computer (all users)" (which is selected) and "Only for me (timeware)". At the bottom of the window, there is a progress bar and three buttons: "< Back", "Next >", and "Cancel".



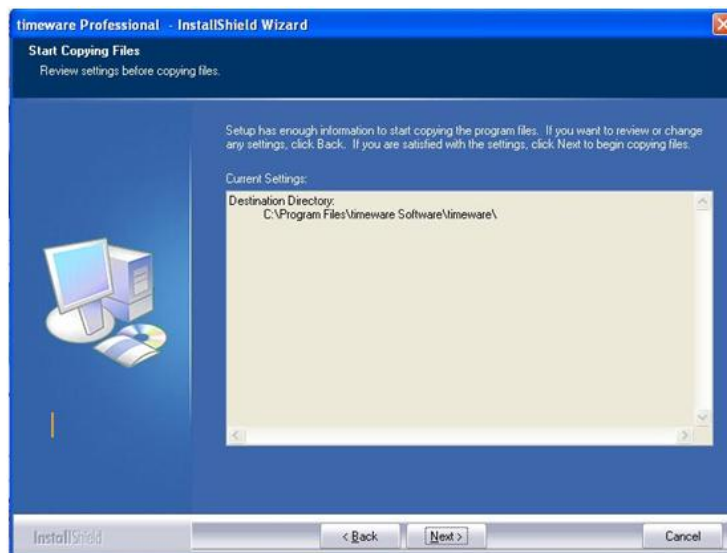
6. It is recommended that you select 'Typical' for a Server install.



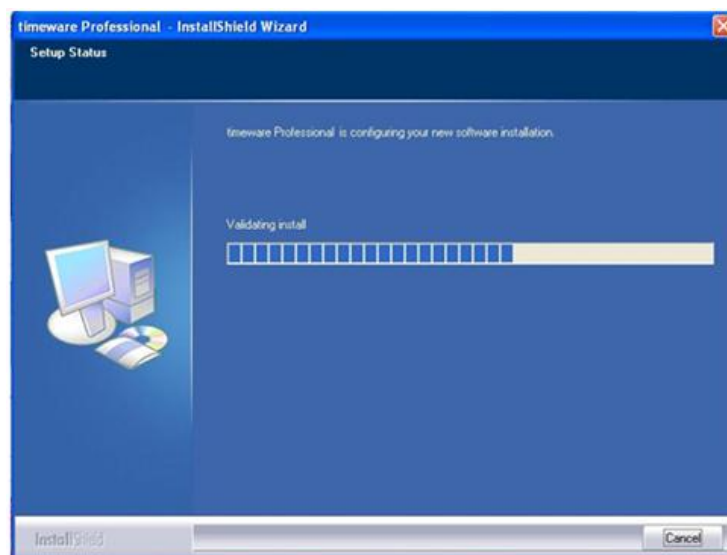
Note that ***all*** of the timeware components will now be installed and that the destination directory for the applications is set to Program files on the Server C: drive.  
If another location is required, select 'Custom' and specify the required path.



7. Confirm the selected installation path.



8. The installation will take several minutes depending on the speed of the timeware® Server.





9. timeware® has now been successfully installed on the server.

